



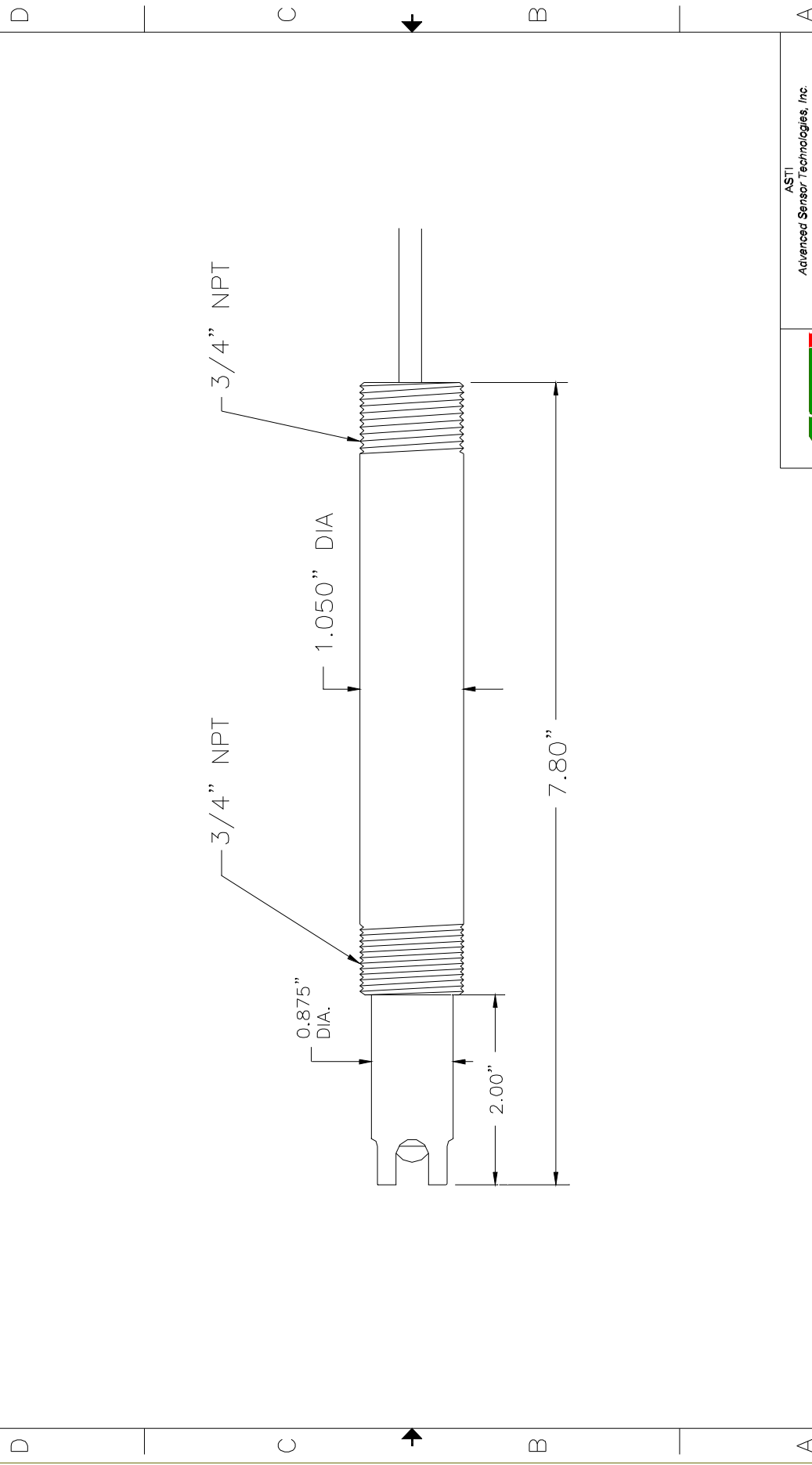
IOTRON™ SENSORS

INTEGRATED pH SENSOR SPECIFICATIONS

<u>Part number:</u>	AB 6130
<u>Configuration:</u>	3/4" – 3/4" MNPT Integrated Bromide Ion Selective Sensor
<u>General Specifications:</u>	
<u>Concentration Range:</u>	1 to 10^{-6} Molar, 80,000 to 0.080 ppm
<u>Lowest Limit of Detection</u>	5×10^{-7} Molar, .040 ppm
<u>pH Range:</u>	1 to 12
<u>Temperature Range:</u>	5 to 50 ° C
<u>Pressure Range:</u>	1 to 20 psig (6.9 to 138 kPag)
<u>Body Material:</u>	CPVC (Chlorinated-Polyvinyl-Chloride)
<u>Junction Material:</u>	Kynar (Poly-Vinylidene-Fluoride)
<u>Dimensions:</u>	Drawing <6-5>
<u>Cable:</u>	RG 174/U Coaxial (without preamplifier)
<u>Connector:</u>	BNC (unless otherwise specified)
<u>Ion Sensor Specifications:</u>	
<u>Measuring Membrane:</u>	Selective Bromide Sensitive Membrane (solid state)
<u>Dimensions:</u>	0.310, (7.8 mm) DIA
<u>Initial Impedance:</u>	Less than 50 M Ohms @ 25 ° C
<u>Interfering Ions:</u>	
<u>Given in Ratios of Permissible Excess:</u>	OH^- (3×10^4), Cl^- (400), I^- (2×10^4), S^{2-} (Trace)
<u>Interfering Ion / Measured Ion (in Molarity)</u>	
<u>Reference System Specifications:</u>	
<u>Type:</u>	Double Junction
<u>Reference Half Cell:</u>	Ag/AgCl, Saturated KCl
<u>Primary Junction:</u>	Porous Ceramic, Saturated KCl in crosslinked polymer
<u>Secondary Junction:</u>	Porous Kynar, Saturated with KNO_3 in crosslinked polymer
<u>Surface Area:</u>	366,000 mil ² , (236 mm ²)
<u>Special Features:</u>	<p>Crosslinked polymer in the reference system is resistant to heat, solvents and to most chemicals. Sensor holds an excess of KNO_3, assuring saturation at all temperatures and extending the life of the sensor.</p> <p>The ion sensitive part of the sensor is designed to resist the attack of most acids, alkali and solvents used in chemical processes.</p> <p>The construction of the sensor permits easy access to the sensing and reference surfaces for cleaning or inspection.</p>
<u>Recommended Applications:</u>	Bromide ion concentration in aqueous solution from wastewater industrial process solutions
<u>Storage and Shelf Life:</u>	At room temperature with closed protector cap, 1 year from date of manufacture.
<u>Standard Hook-Up Options:</u>	No Preamp - BNC Connector + TC lead wires With Preamp – Multiconductor Lead Wires – See Hook Up Schematics

4 3 2 1

REVISIONS				
ZONE	REV	DESCRIPTION	DATE	APPROVED
2	1			



ASTI		Advanced Sensor Technologies, Inc.	
INTEGRATED pH SENSOR			
REF. DRAWING <6-5>			
SIZE	WEB NO.	DWG NO.	REV
2	#<6-5>	AST16-5.DWG	1
DRAWN BY: PETE CSISZAR		SCALE: NONE	DWG: MARCH, 2003
		SHEET	1 OF 1

1 2 3 4