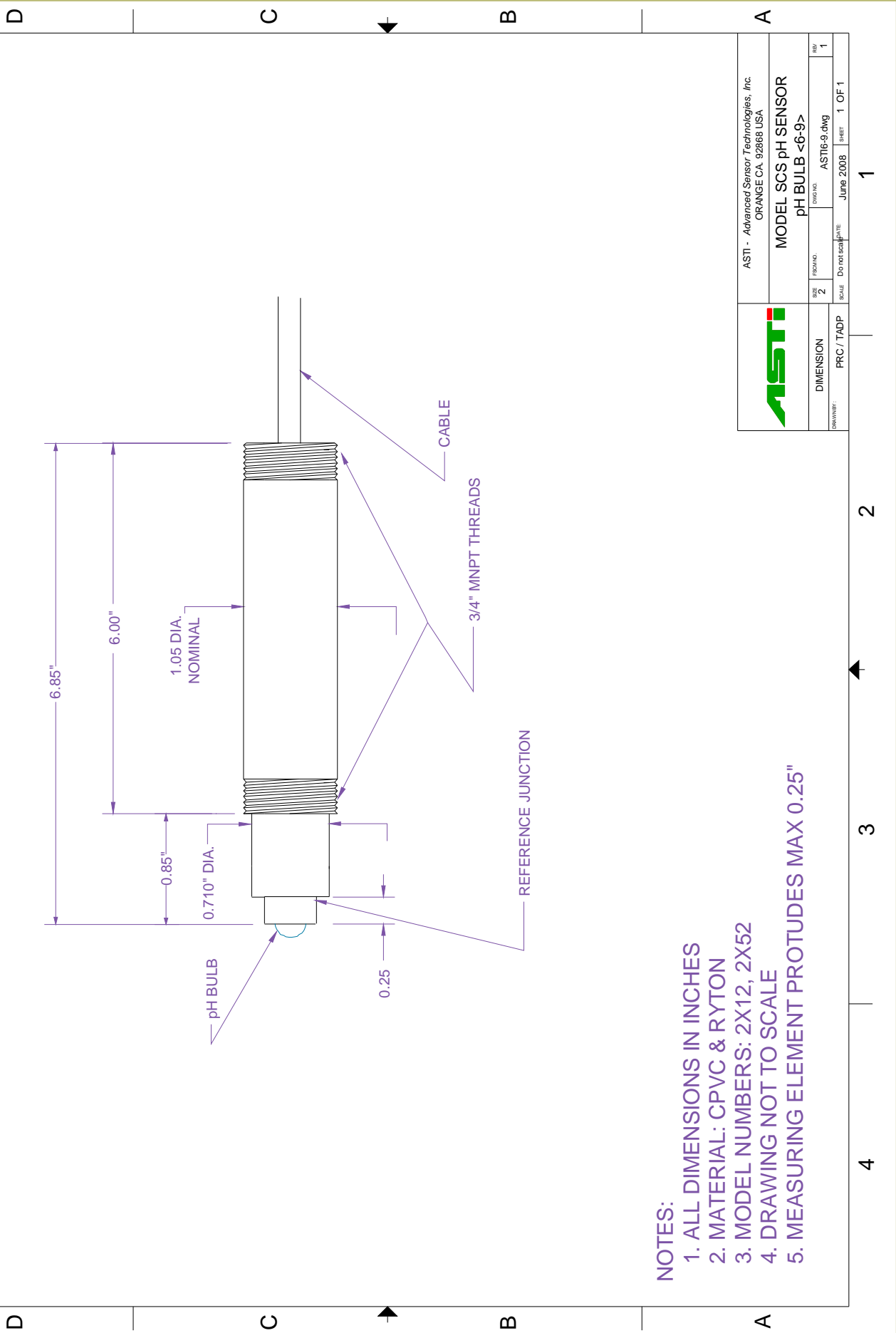


<u>Part Number:</u>	2912
<u>Configuration:</u>	¾"- ¾" MNPT Immersion Integrated Saturated Sodium Resistant pH Sensor
<u>General Specifications:</u>	
<u>pH Range:</u>	0 to 11 pH (0 to 14 pH, In the absence of Sodium Ions.)
<u>Temperature Range:</u>	5 to 70 ° C
<u>Pressure Range:</u>	1 to 60 psig (6.9 to 414 kPag)
<u>Body Material:</u>	Chlorinated-Polyvinyl-Chloride (CPVC)
<u>Junction Material:</u>	Porous PolyEthylene (PE)
<u>Dimensions:</u>	Drawing <6-9>
<u>Cable:</u>	RG 174/U Coaxial; 10 feet of cable standard
<u>Connector:</u>	Male BNC (unless otherwise specified)
<u>pH Sensor Specifications:</u>	
<u>Measuring Glass Type:</u>	Hemispherical, Clear Glass (CHIII), Sodium Resistant
<u>Dimensions:</u>	0.310, (7.8 mm) DIA
<u>Initial Impedance:</u>	Less than 2000 M Ohms @ 25 ° C
<u>Alkaline Ion Error:</u>	Less than 0.15 pH in 1.0 M K ⁺ at pH 14.0
<u>Acidic Error:</u>	Less than 0.01 pH in 1.0 M HCl @ 0.0 pH
<u>Reference System Specifications:</u>	
<u>Type:</u>	Double Junction
<u>Reference Half Cell:</u>	Ag/AgCl, Saturated KCl
<u>Primary Junction:</u>	Porous Ceramic, Saturated KCl in crosslinked polymer
<u>Secondary Junction:</u>	Porous Polyethylene, Saturated with KCl in crosslinked polymer
<u>Surface Area:</u>	554,000 mil ² (357 mm ²)
<u>Special Features:</u>	Crosslinked polymer is resistant to heat, solvents and to most chemicals. Sensor holds an excess of KCl, assuring saturation at all temperatures and extending in situ sensor life. The (CH III), Sodium Resistant pH Glass is though the major contributor to the performance of this very special sensor. Due to the pH glass composition the exposure of the sensor to saturated sodium solutions, even at elevated temperature and/or for a prolonged time, does not deteriorate either the pH response or the stability of the electrode calibration.
<u>Recommended Applications:</u>	Sodium brines, food, feed water, seawater, biological solutions, saline solutions, dialysis, sodium containing waste water, etching solutions, pollution control devices, where long service life or operation at remote locations where (no) low maintenance is required.
<u>Storage and Shelf Life:</u>	At room temperature with closed protector cap, 1 year from date of manufacture.

1 2 3 4

ZONE	REV	DESCRIPTION	DATE	APPROVED
	1			



- NOTES:**
1. ALL DIMENSIONS IN INCHES
 2. MATERIAL: CPVC & RYTON
 3. MODEL NUMBERS: 2X12, 2X52
 4. DRAWING NOT TO SCALE
 5. MEASURING ELEMENT PROTRUDES MAX 0.25"

		ASTI - Advanced Sensor Technologies, Inc. ORANGE CA. 92868 USA	
		MODEL SCS pH SENSOR pH BULB <6-9>	
DIMENSION SIZE 2	PRC / TADP Do not scale	DRAWING ASTIG-9.dwg	REV 1
SCALE		DATE June 2008	SHEET 1 OF 1

1 2 3 4