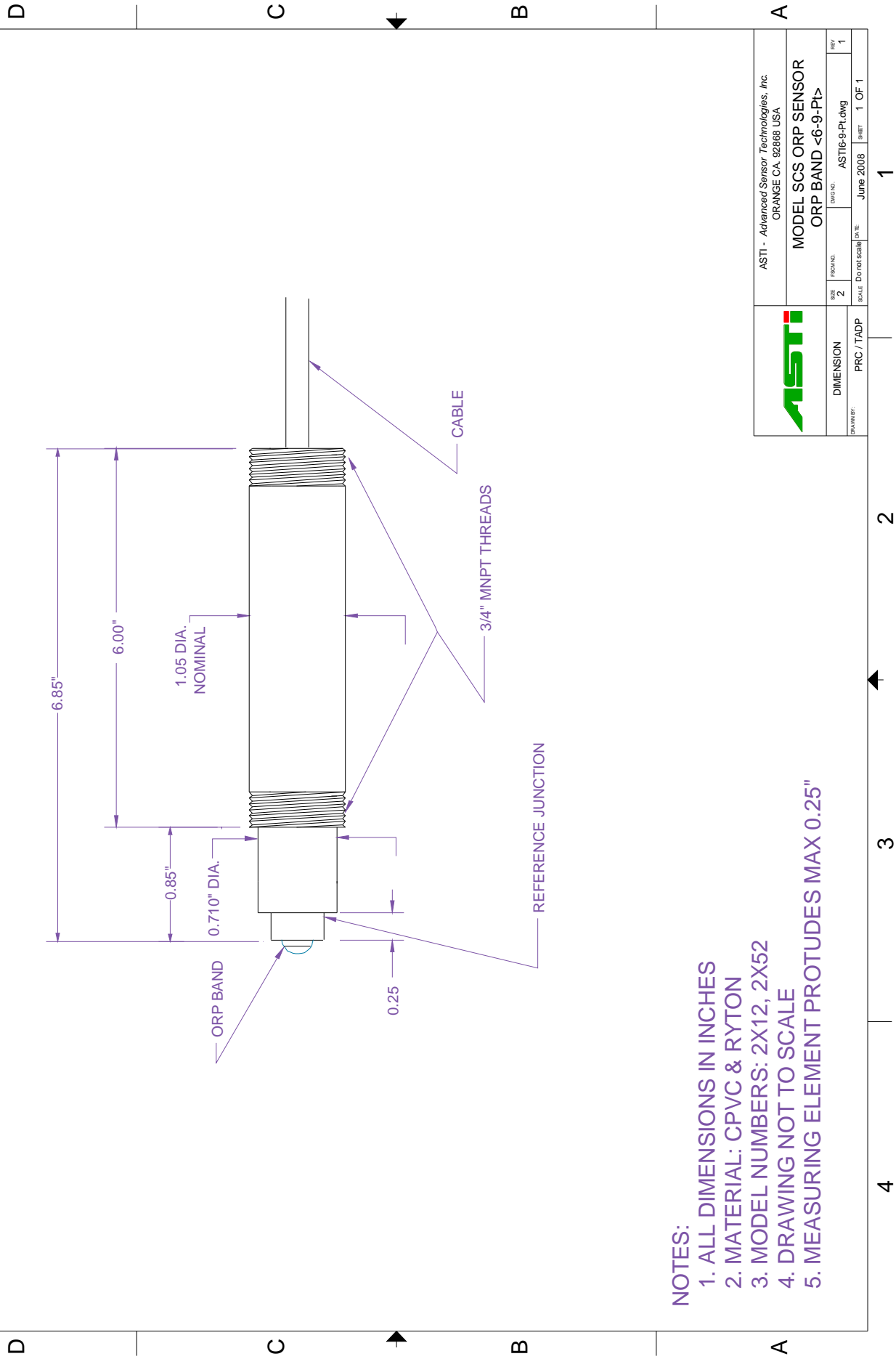


<u>Part Number:</u>	2812
<u>Configuration:</u>	3/4" - 3/4" MNPT Immersion Integrated General Purpose ORP Sensor
<u>General Specifications:</u>	
<u>mV Range:</u>	-2000 to +2000 mV
<u>Temperature Range:</u>	5 to 70 ° C
<u>Pressure Range:</u>	1 to 60 psig (6.9 to 414 kPag)
<u>Body Material:</u>	Chlorinated-Polyvinyl-Chloride (CPVC)
<u>Junction Material:</u>	Porous PolyEthylene (PE)
<u>Dimensions:</u>	Drawing <6-9-Pt>
<u>Cable:</u>	RG 174/U Coaxial; 10 feet of cable standard
<u>Connector:</u>	BNC (unless otherwise specified)
<u>ORP Sensor Specifications:</u>	
<u>Measuring Glass Type:</u>	Hemispherical Glass with high purity Pt band
<u>Dimensions:</u>	0.310/0.185, (7.8/4.7 mm) DIA
<u>Reference System Specifications:</u>	
<u>Type:</u>	Double Junction
<u>Reference Half Cell:</u>	Ag/AgCl, Saturated KCl
<u>Primary Junction:</u>	Porous Ceramic, Saturated KCl in crosslinked polymer
<u>Secondary Junction:</u>	Porous Polyethylene, Saturated with KCl in crosslinked polymer
<u>Surface Area:</u>	554,000 mil ² (357 mm ²)
<u>Special Features:</u>	Crosslinked non-porous ionically conductive polymer is resistant to heat, solvents and to most chemicals. Sensor holds an excess of KCl, assuring saturation at all temperatures and extending in situ sensor life. The reference system holds a supply of aqueous saturated KCl, eliminating effects of intruding contaminants and can permit the sensor to be left in dry condition for prolonged periods of time.
<u>Recommended Applications:</u>	Plating baths, plating wastewater treatment, chemical processes, pollution control, measurements where long service life or operation at remote locations where (no) low maintenance is required.
<u>Storage and Shelf Life:</u>	At room temperature with closed protector cap, 1 year from date of manufacture.
<u>Standard Hook-Up Options</u>	No Preamp - BNC Connector + TC lead wires With Preamp – Multiconductor Lead Wires – See Hook Up Schematics

1 2 3 4

REVISIONS				
ZONE	REV	DESCRIPTION	DATE	APPROVED
	1			



- NOTES:**
1. ALL DIMENSIONS IN INCHES
 2. MATERIAL: CPVC & RYTON
 3. MODEL NUMBERS: 2X12, 2X52
 4. DRAWING NOT TO SCALE
 5. MEASURING ELEMENT PROTRUDES MAX 0.25"

		ASTI - Advanced Sensor Technologies, Inc. ORANGE CA. 92868 USA	
MODEL SCS ORP SENSOR ORP BAND <6-9-PT>		SIZE 2	REV 1
DRAWN BY: PRC / TADP		DATE: June 2008	SHEET: 1 OF 1