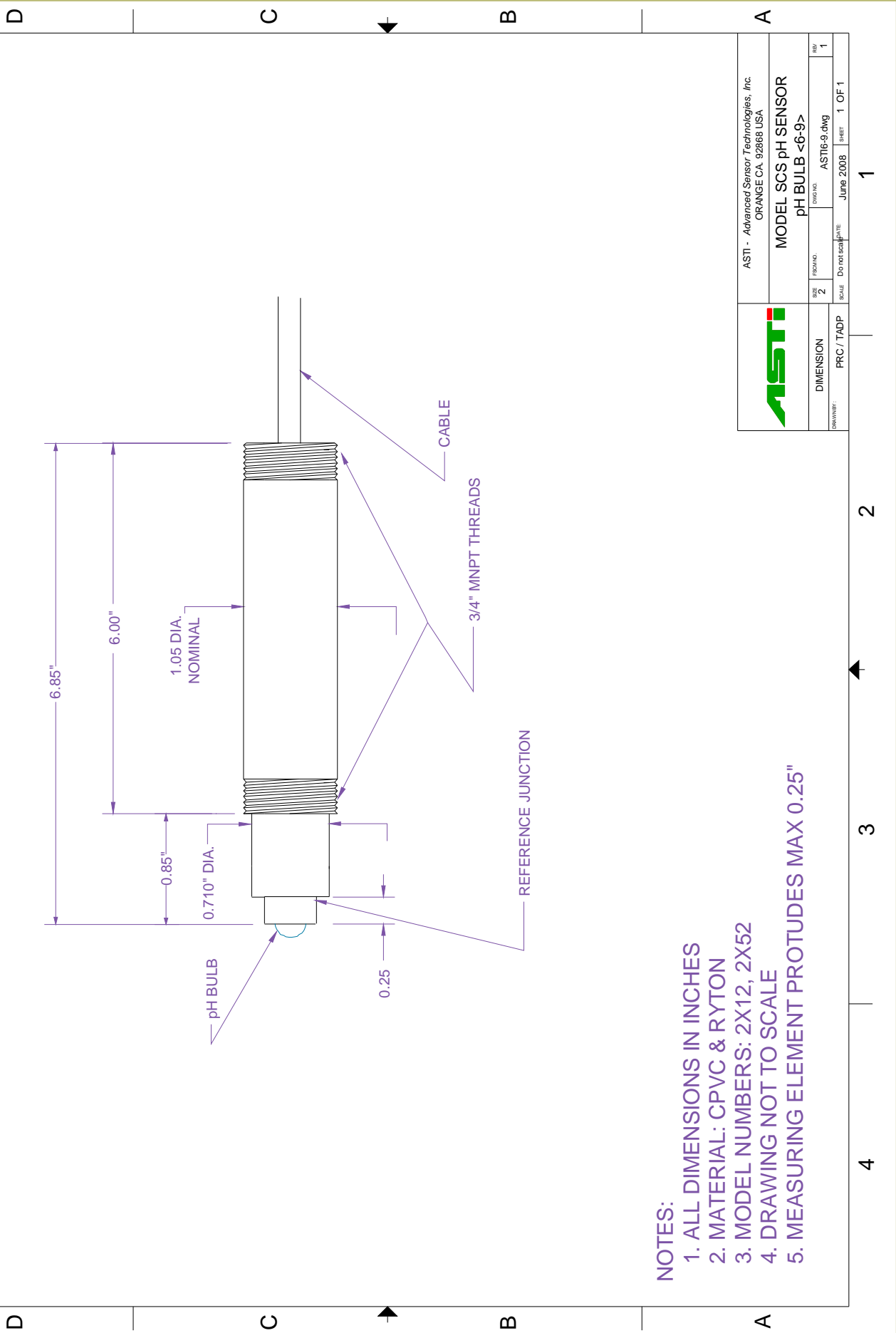



<u>Part Number:</u>	2412
<u>Configuration:</u>	¾"- ¾" MNPT Immersion Integrated Acid/Fluoride Resistant pH Sensor
<u>General Specifications:</u>	
<u>pH Range:</u>	0 to 12 pH (0 to 11 pH, with high HF Resistant Option)
<u>Temperature Range:</u>	5 to 70 ° C
<u>Pressure Range:</u>	1 to 60 psig (6.9 to 414 kPag)
<u>Body Material:</u>	Chlorinated-PolyVinyl-Chloride (CPVC)
<u>Junction Material:</u>	Porous PolyEthylene (PE)
<u>Dimensions:</u>	Drawing <6-9>
<u>Cable:</u>	RG 174/U Coaxial; 10 feet of cable standard
<u>Connector:</u>	Male BNC (unless otherwise specified)
<u>pH Sensor Specifications:</u>	
<u>Measuring Glass Type:</u>	Hemispherical Thick Wall, MUGG, Acid Fluoride Resistant Glass
<u>Dimensions:</u>	0.310, (7.8 mm) DIA
<u>Initial Impedance:</u>	MUGG - Less than 800 M Ohms @ 25 ° C. CH III – Less than 2,000 M Ohms with the high HF option.
<u>Alkaline Ion Error:</u>	Less than 0.15 pH in 1.0 M K ⁺ at pH 14.0
<u>Acidic Error:</u>	Less than 0.01 pH in 1.0 M HCl @ 0.0 pH
<u>Reference System Specifications:</u>	
<u>Type:</u>	Double Junction
<u>Reference Half Cell:</u>	Ag/AgCl, Saturated KCl
<u>Primary Junction:</u>	Porous Ceramic, Saturated KCl in crosslinked polymer
<u>Secondary Junction:</u>	Porous Polyethylene, Saturated with KCl in crosslinked polymer
<u>Surface Area:</u>	554,000 mil ² (357 mm ²)
<u>Special Features:</u>	Crosslinked non-porous ionically conductive polymer is resistant to heat, solvents and to most chemicals. Sensor holds an excess of KCl, assuring saturation at all temperatures and extending in situ sensor life. The reference system holds a supply of aqueous saturated KCl, eliminating effects of intruding contaminants and can permit the sensor to be left in dry condition for prolonged periods of time.
<u>Recommended Applications:</u>	Plating baths, plating wastewater treatment, chemical processes, pollution control, measurements where long service life or operation at remote locations where (no) low maintenance is required.
<u>Storage and Shelf Life:</u>	At room temperature with closed protector cap, 1 year from date of manufacture.

1 2 3 4

ZONE	REV	DESCRIPTION	DATE	APPROVED
	1			



- NOTES:**
1. ALL DIMENSIONS IN INCHES
 2. MATERIAL: CPVC & RYTON
 3. MODEL NUMBERS: 2X12, 2X52
 4. DRAWING NOT TO SCALE
 5. MEASURING ELEMENT PROTRUDES MAX 0.25"

		ASTI - Advanced Sensor Technologies, Inc. ORANGE CA. 92868 USA	
MODEL SCS pH SENSOR pH BULB <6-9>		DRAWING NO. ASTI6-9.dwg	REV 1
DIMENSION SIZE 2	PRC / TADP	SCALE Do not scale	SHEET 1 OF 1
DRAWING DATE June 2008		SHEET 1 OF 1	

1 2 3 4